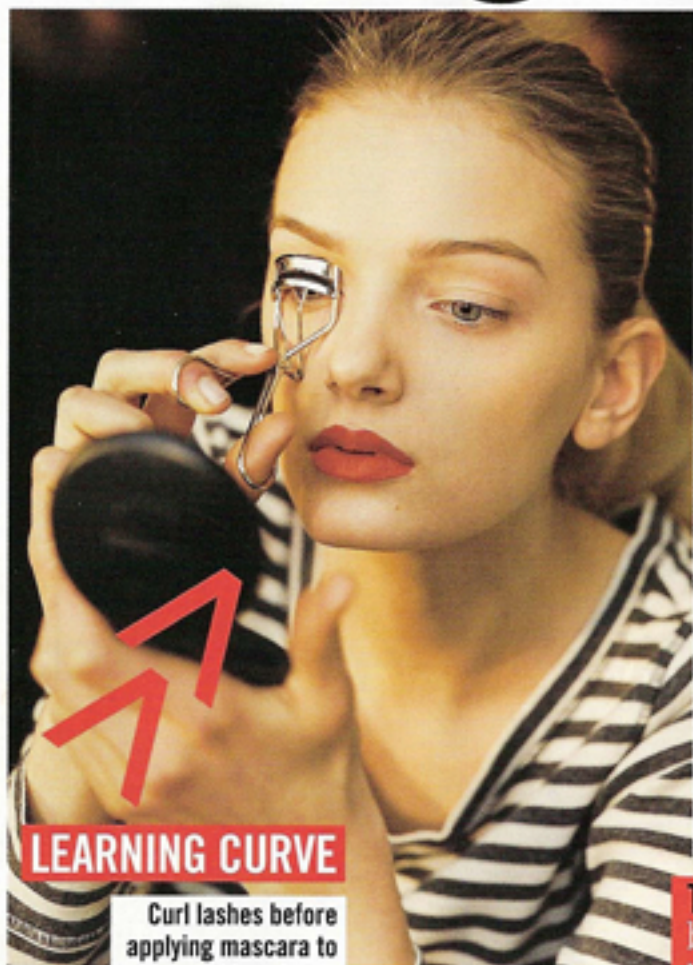


BEAUTY & HEALTH
fringe benefits

LEARNING CURVE

Curl lashes before applying mascara to avoid breakage.

Score lovely lashes in the blink of an eye.

Lashes can alter your look, whether you opt for a spiky, mod fringe like sixties model Penelope Tree, or a coy curl like actress Kirsten Dunst. Beginners should start simple: "For a natural lash, use a tint [try the water-based Clean Lash Tint by Neutrogena]," says California makeup artist Joni Powell, who perfects celebrity eyes on *The O.C.* "For extra oomph, coat lashes with a primer and a thicker mascara." Before applying product, gently close a curler at the base of the lashes and pulse up toward the ends. Wipe excess mascara off the tip of the wand and wiggle horizontally upward to the lash tips. Curious about falsies? For easy experimentation, cut up a full-size set. "Play with a few lashes on the outer eye corners," says Powell. Professional lash extensions are pricier but can last up to two months. If you go with a pro, prevent infection by making sure to see someone certified by a company like Xtreme Lashes. Batter up! —HOLLY SIEGEL

TIP 1: Eye-makeup remover before bedtime is a must, especially if you use waterproof mascara.

TIP 2: Don't pump the wand in and out of the tube: It encourages bacteria growth and dries mascara up.

TIP 3: For a daytime alternative, try navy mascara, which brightens eyes.

TIP 4: Dramatic lashes highlight unkempt brows. Groom accordingly!

TIP 5: For a night out, intensify your look with colored mascara.



BATTING PRACTICE
CLOCKWISE FROM TOP: REVLON FANTASY LENGTHS EYELASHES, \$6. DRUGSTORES. TARTE EYELASH CURLER, \$15. SEPHORA. CLINIQUE MAKEUP REMOVER, \$17. WWW.CLINIQUE.COM. YSL VOLUMIZING MASCARA NO. 1 IN INFINITE BLACK, \$25. NEIMAN MARCUS. N.Y.C. NEW YORK COLOR HIGHLIGHTER PENCIL IN MISS SPARKLE, \$3. DRUGSTORES.